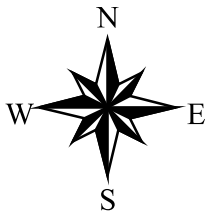
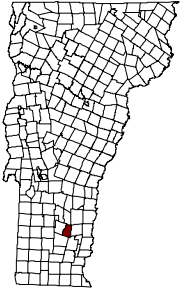
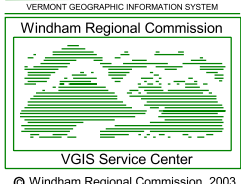


# Town of Windham, Vt. Zoning Districts Map

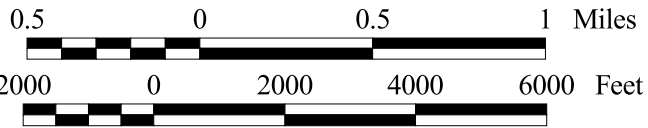
*adopted by vote of the Town  
May 1, 2001*



**GIS**

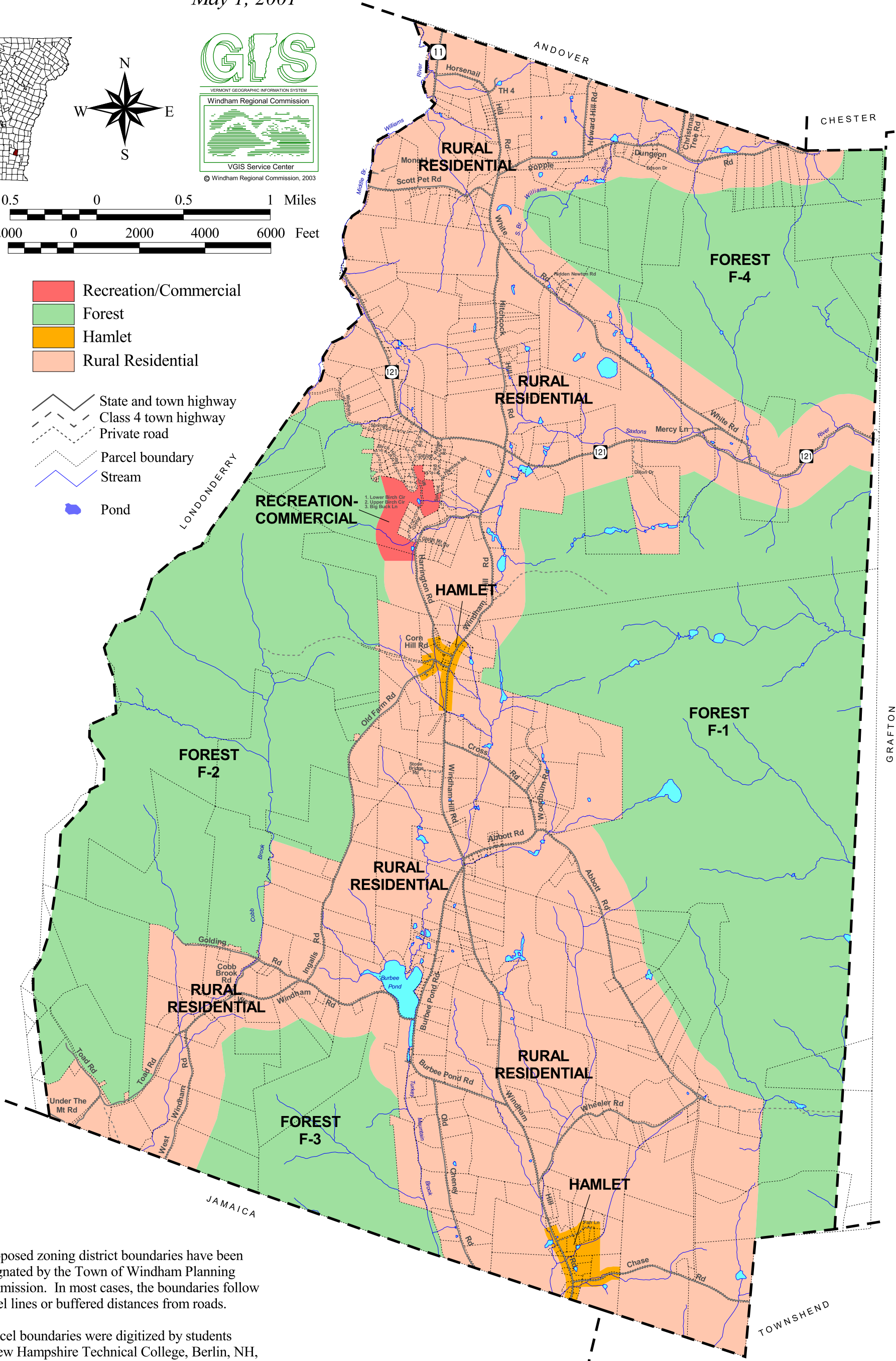


© Windham Regional Commission, 2003



- Recreation/Commercial
- Forest
- Hamlet
- Rural Residential

- State and town highway
- Class 4 town highway
- Private road
- Parcel boundary
- Stream
- Pond



- Proposed zoning district boundaries have been designated by the Town of Windham Planning Commission. In most cases, the boundaries follow parcel lines or buffered distances from roads.

- Parcel boundaries were digitized by students at New Hampshire Technical College, Berlin, NH, from 1:5000 mylar tax maps in 1996.